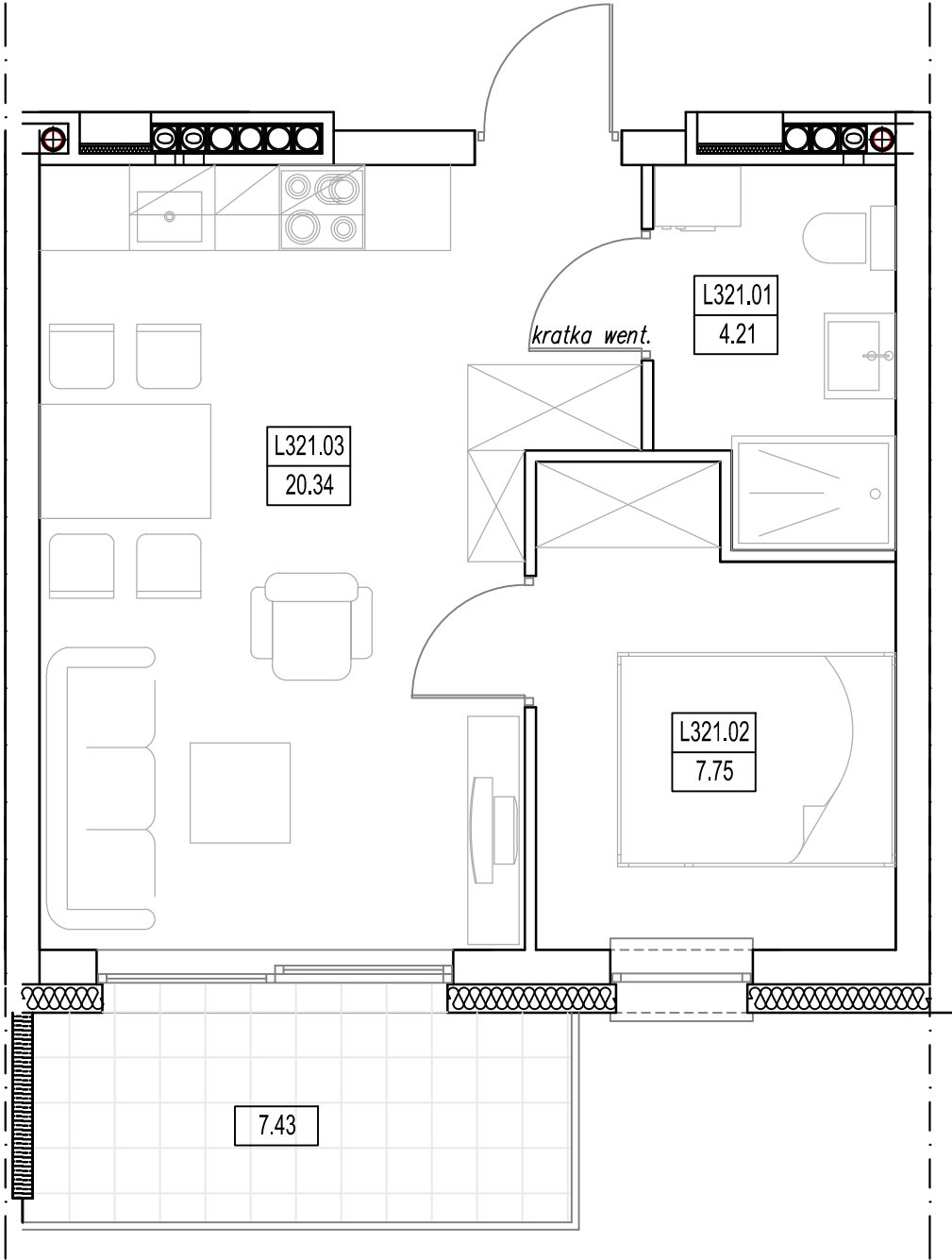
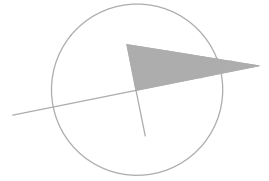
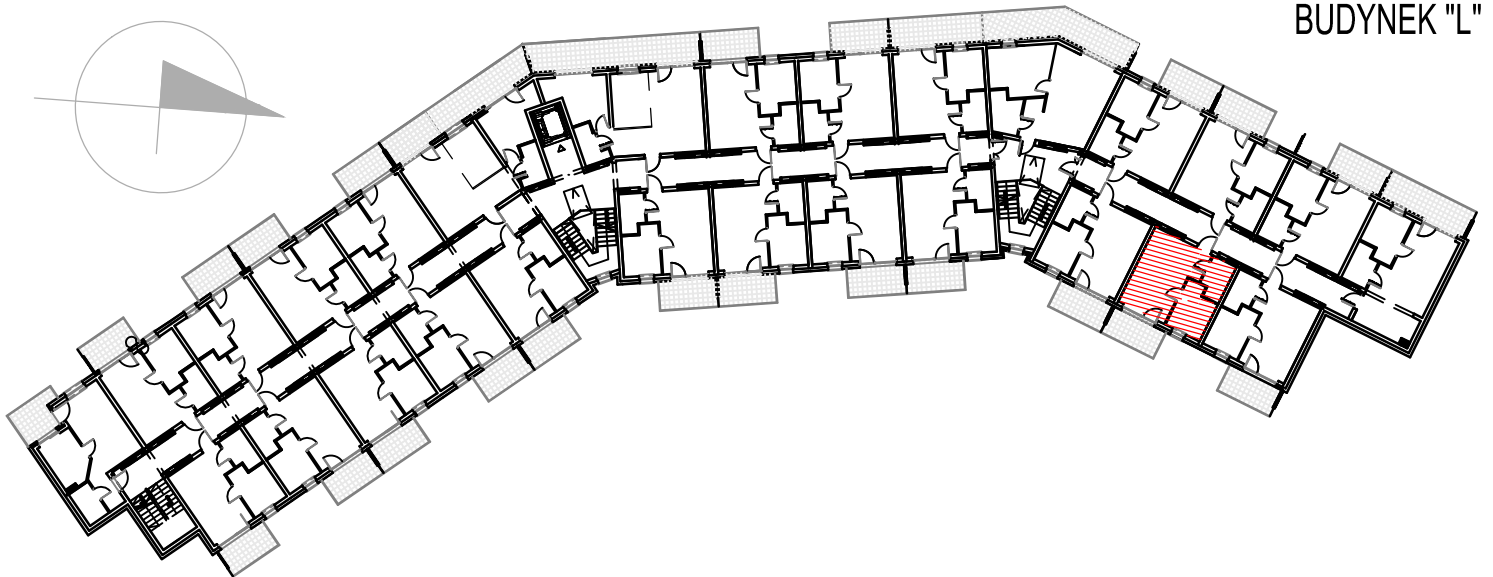


"BURSZTYNOWE OSIEDLE" - JANTAR UL. RYBACKA
 BUDYNEK "L", PIĘTRO II
 MIESZKANIE L-321 32,30m²



MIESZKANIE L-321 (2 POKOJE)			
L321.01	Łazienka	4.21	4.21
L321.02	Pokój	7.75	7.75
L321.03	Pokój/aneks kuch.	20.34	20.34
RAZEM MIESZKANIE L-321		32.30	32.30



BUDYNEK "L"