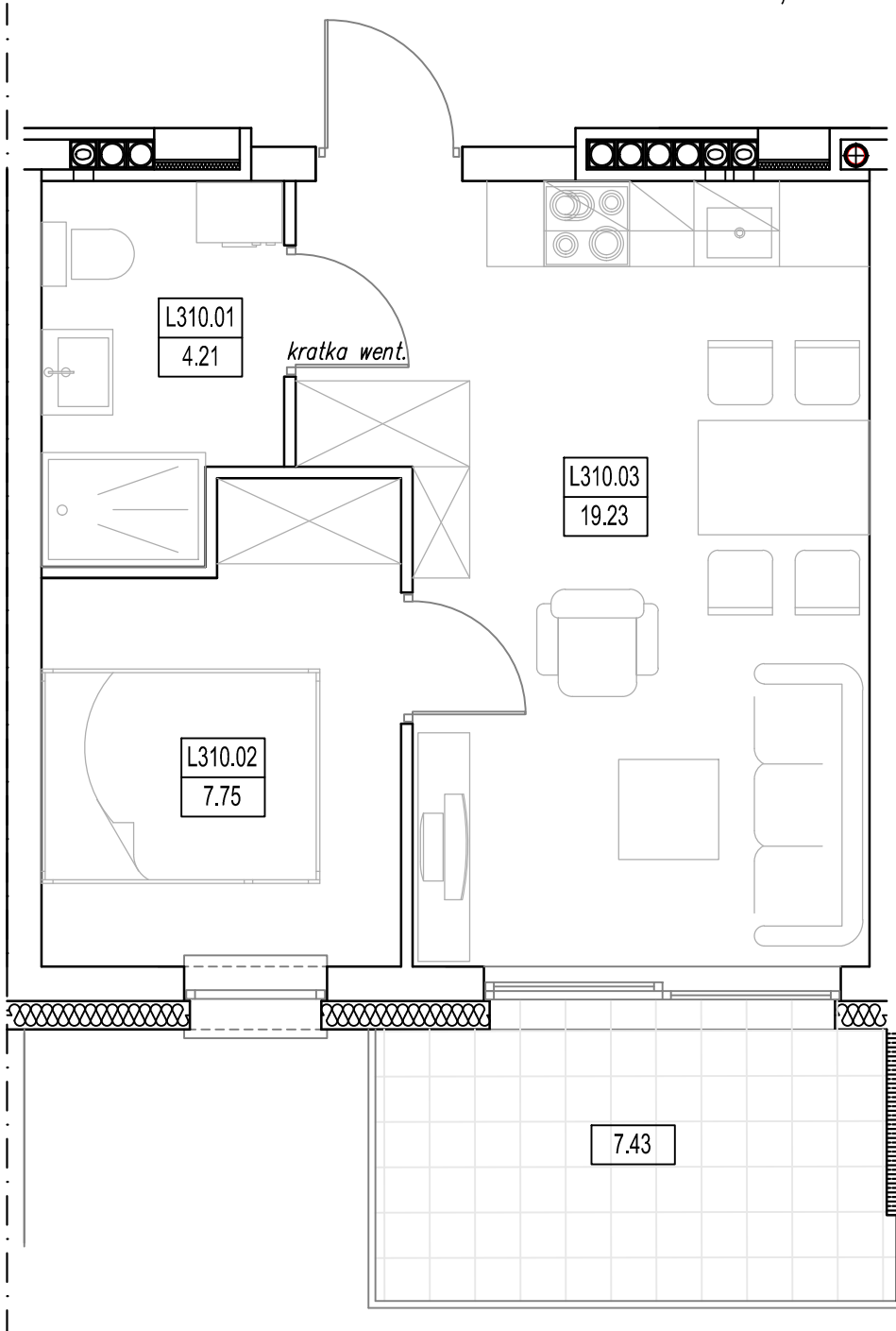
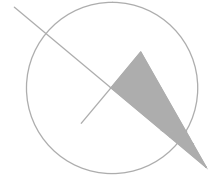
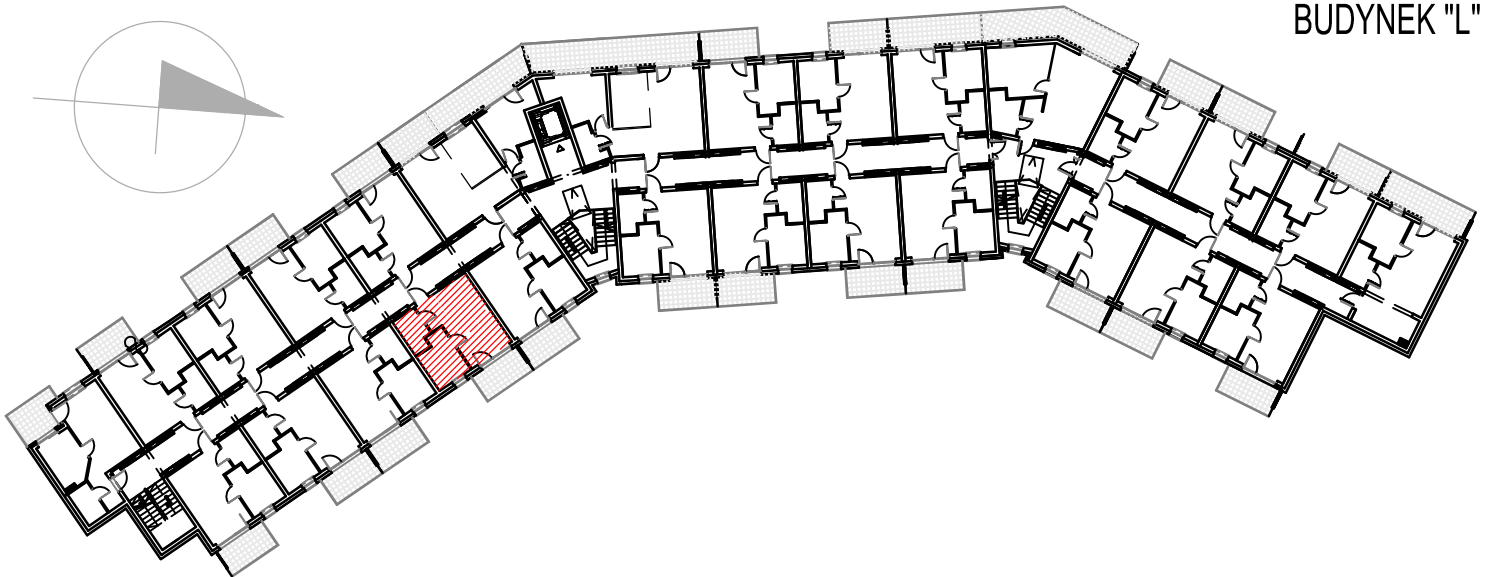
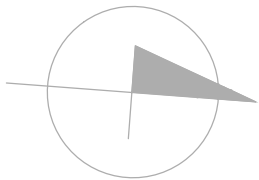


"BURSZTYNOWE OSIEDLE" - JANTAR UL. RYBACKA
 BUDYNEK "L", PIĘTRO II
 MIESZKANIE L-310 31,19m²



| MIESZKANIE L-310 (2 POKOJE) | | | |
|-----------------------------|-------------------|-------|-------|
| L310.01 | Łazienka | 4.21 | 4.21 |
| L310.02 | Pokój | 7.75 | 7.75 |
| L310.03 | Pokój/aneks kuch. | 19.23 | 19.23 |
| RAZEM MIESZKANIE L-310 | | 31.19 | 31.19 |



BUDYNEK "L"