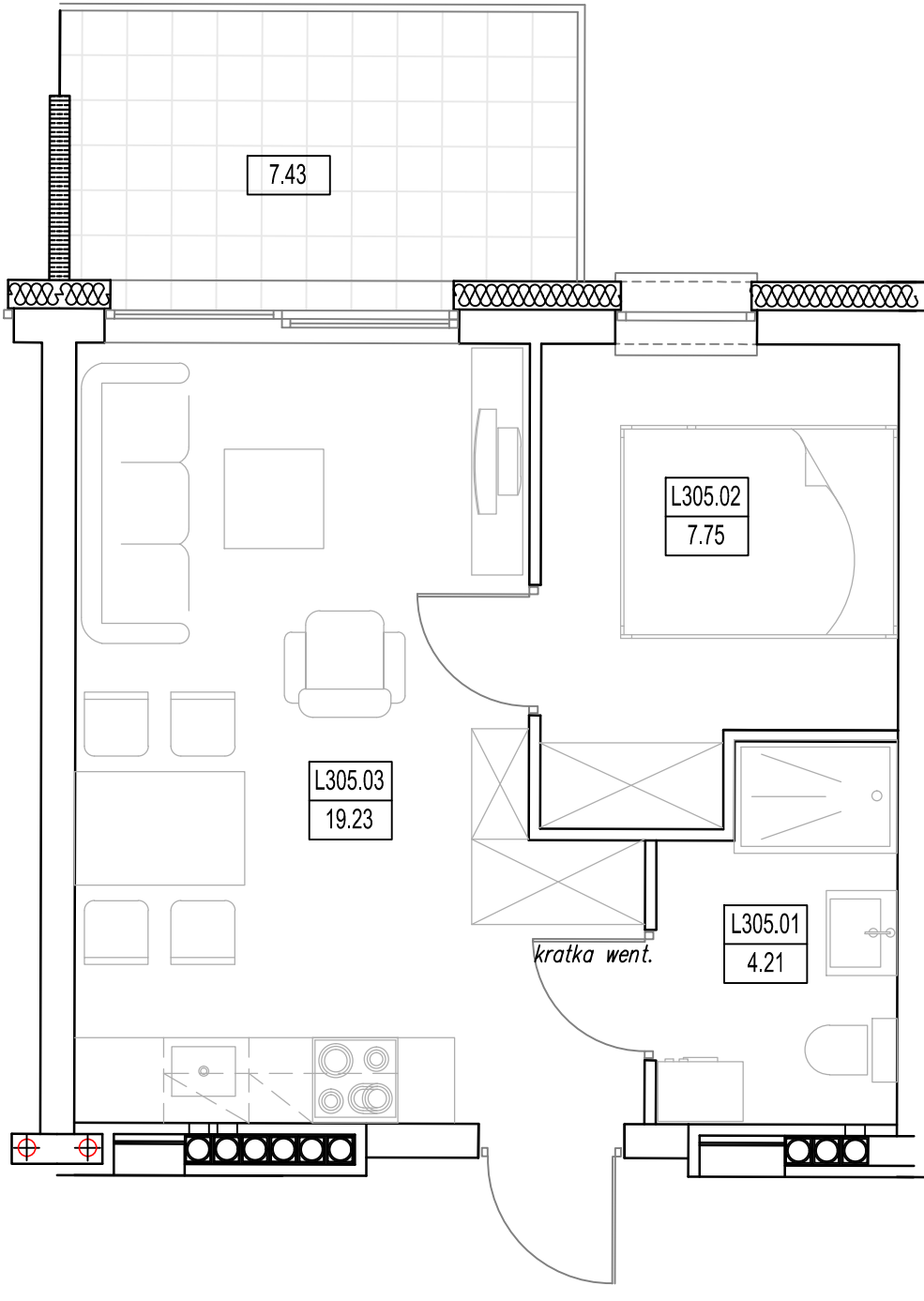
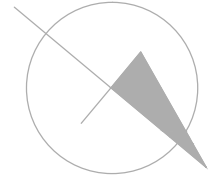
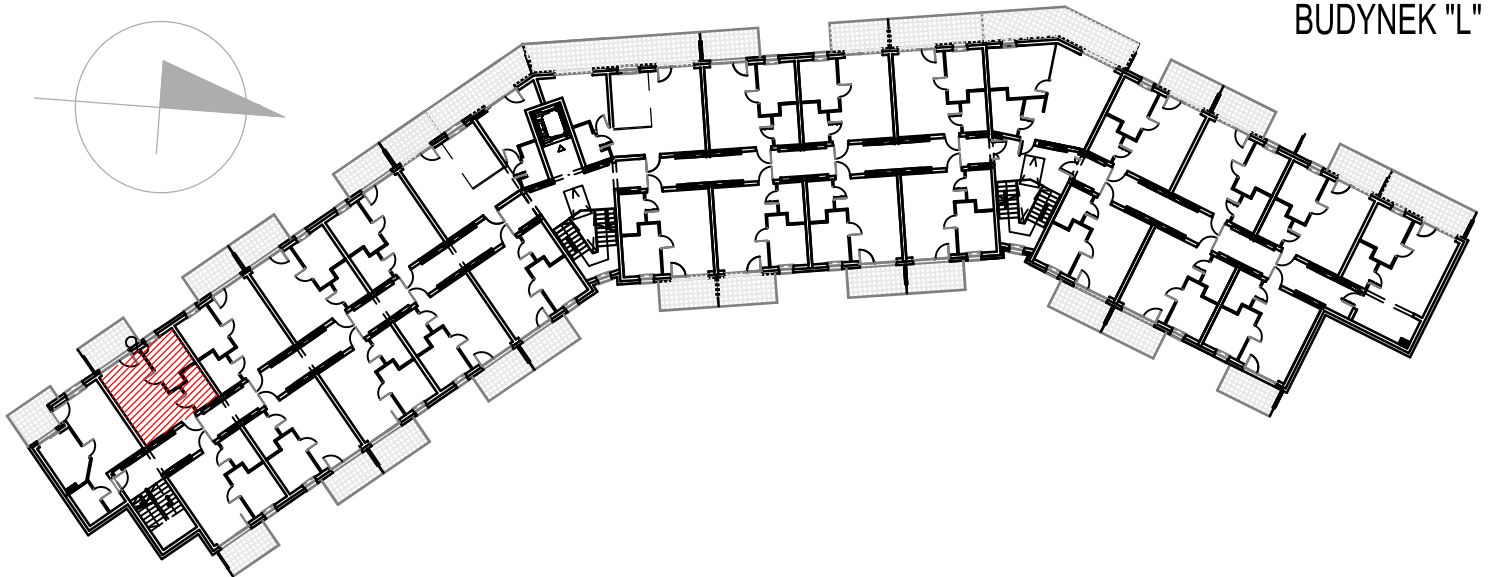


"BURSZTYNOWE OSIEDLE" - JANTAR UL. RYBACKA
 BUDYNEK "L", PIĘTRO II
 MIESZKANIE L-305 31,19m²



MIESZKANIE L-305 (2 POKOJE)			
L305.01	Łazienka	4.21	4.21
L305.02	Pokój	7.75	7.75
L305.03	Pokój/aneks kuch.	19.23	19.23
RAZEM MIESZKANIE L-305		31.19	31.19



BUDYNEK "L"