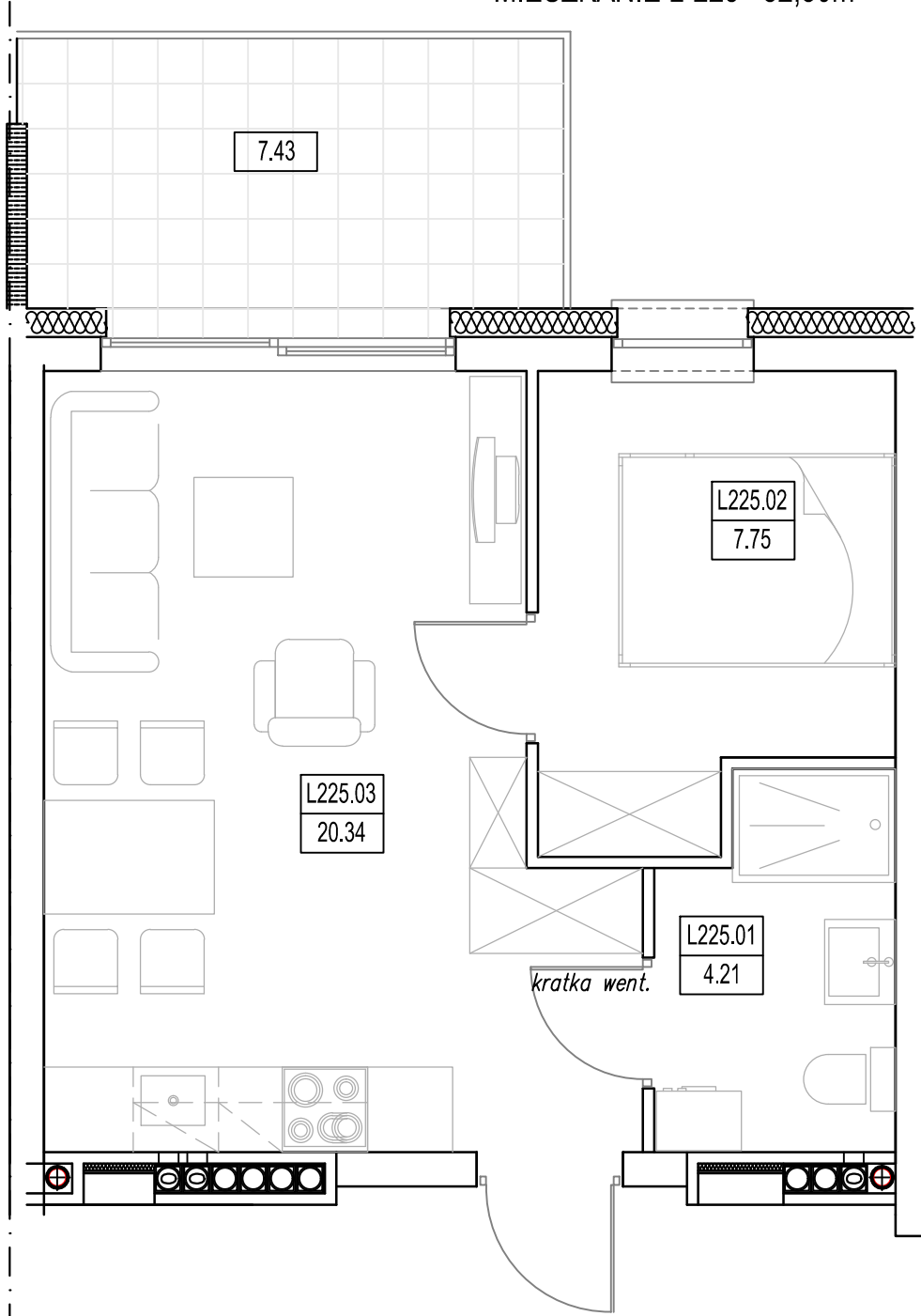
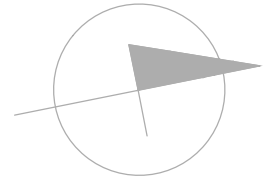
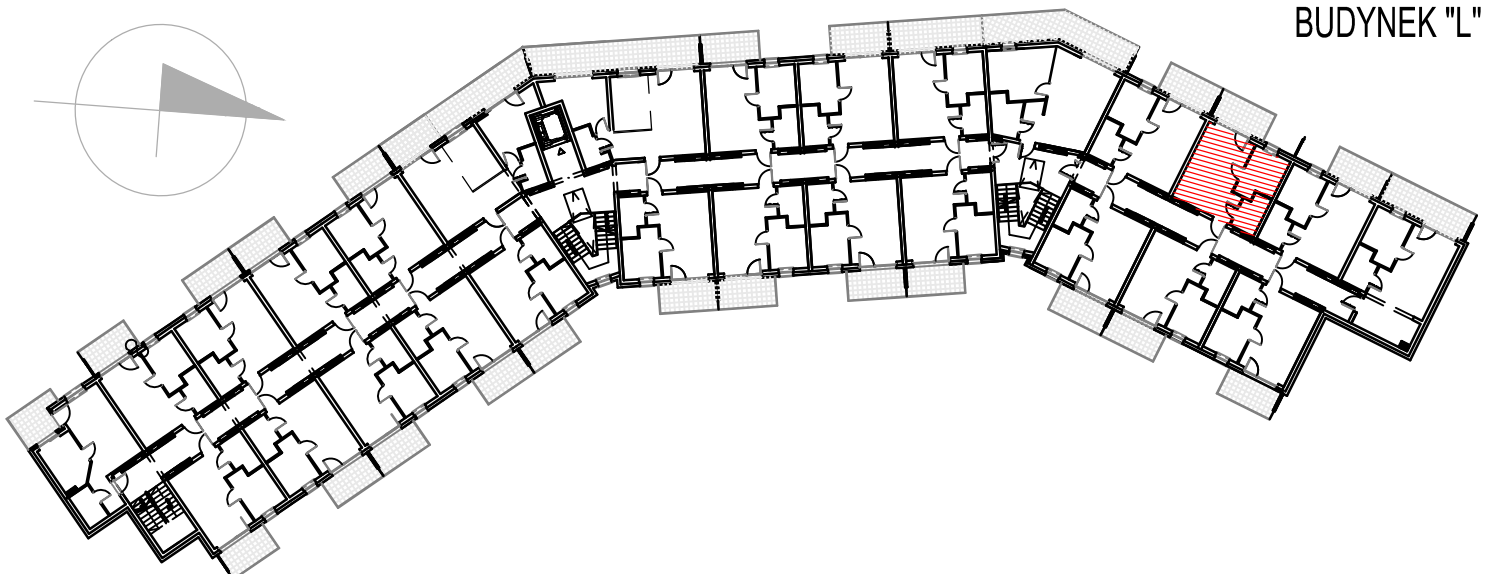


"BURSZTYNOWE OSIEDLE" - JANTAR UL. RYBACKA
 BUDYNEK "L", PIĘTRO I
 MIESZKANIE L-225 32,30m²



| MIESZKANIE L-225 (2 POKOJE) | | | |
|-----------------------------|-------------------|-------|-------|
| L225.01 | Łazienka | 4.21 | 4.21 |
| L225.02 | Pokój | 7.75 | 7.75 |
| L225.03 | Pokój/aneks kuch. | 20.34 | 20.34 |
| RAZEM MIESZKANIE L-225 | | 32.30 | 32.30 |



BUDYNEK "L"