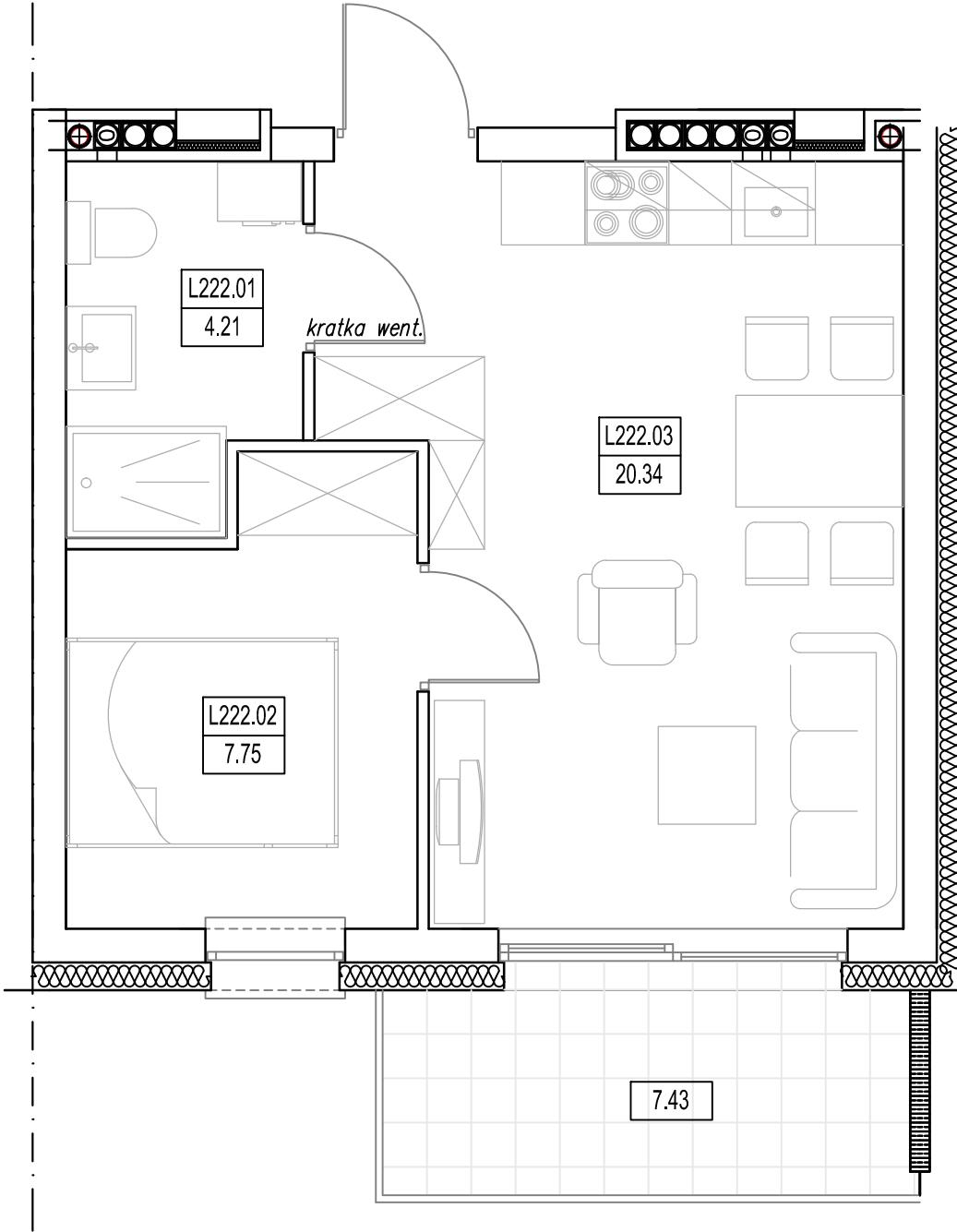
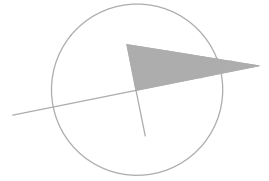
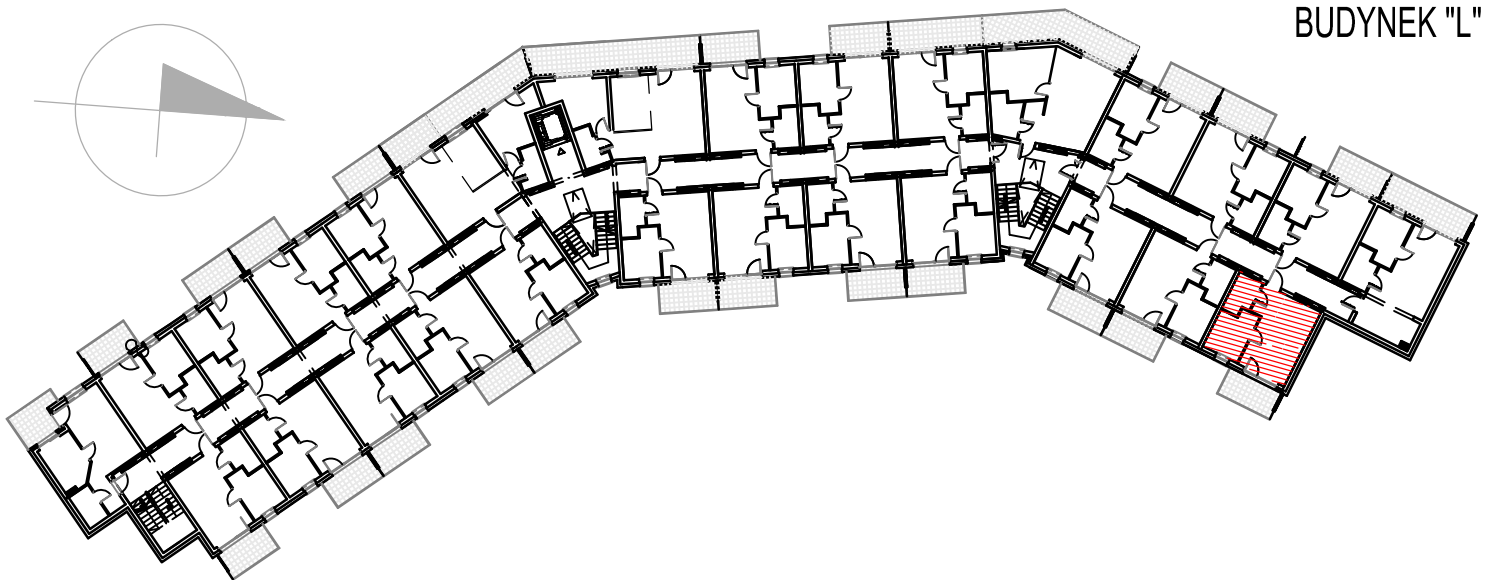


"BURSZTYNOWE OSIEDLE" - JANTAR UL. RYBACKA
 BUDYNEK "L", PIĘTRO I
 MIESZKANIE L-222 32,30m²



MIESZKANIE L-222 (2 POKOJE)			
L222.01	Łazienka	4.21	4.21
L222.02	Pokój	7.75	7.75
L222.03	Pokój/aneks kuch.	20.34	20.34
RAZEM MIESZKANIE L-222		32.30	32.30



BUDYNEK "L"