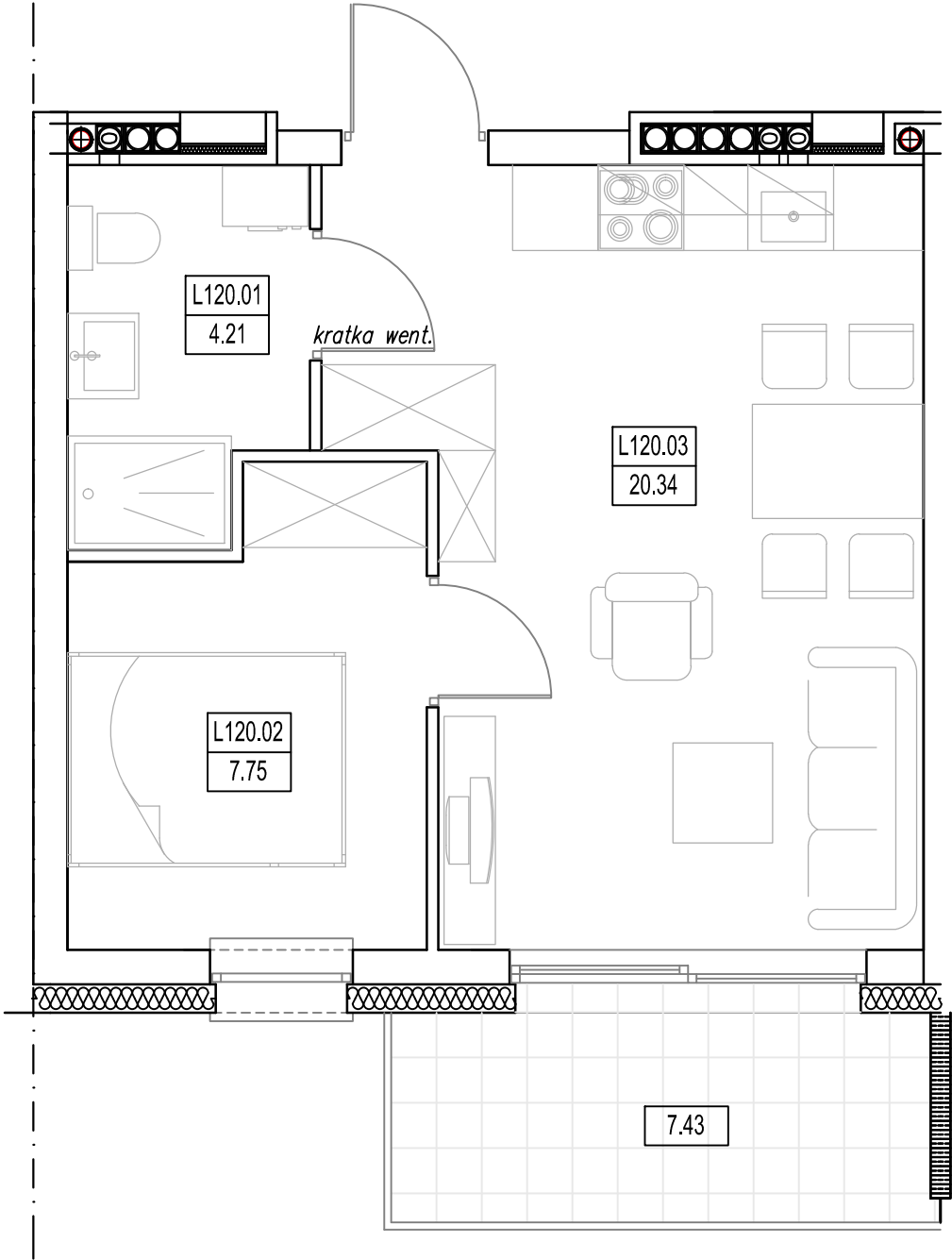
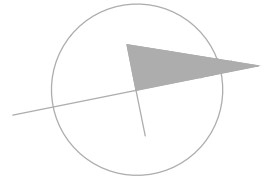
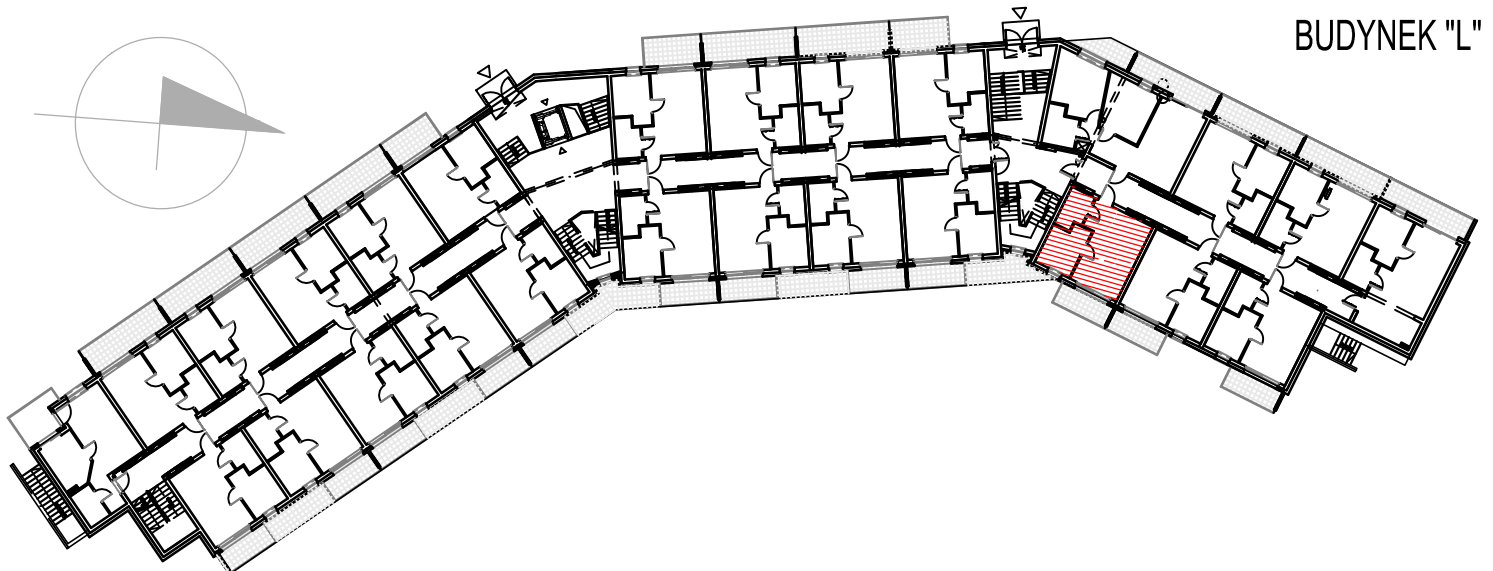


"BURSZTYNOWE OSIEDLE" - JANTAR UL. RYBACKA
 BUDYNEK "L", PARTER
 MIESZKANIE L-120 32,30m²



MIESZKANIE L-120 (2 POKOJE)			
L120.01	Łazienka	4.21	4.21
L120.02	Pokój	7.75	7.75
L120.03	Pokój/aneks kuch.	20.34	20.34
RAZEM MIESZKANIE L-120		32.30	32.30



BUDYNEK "L"