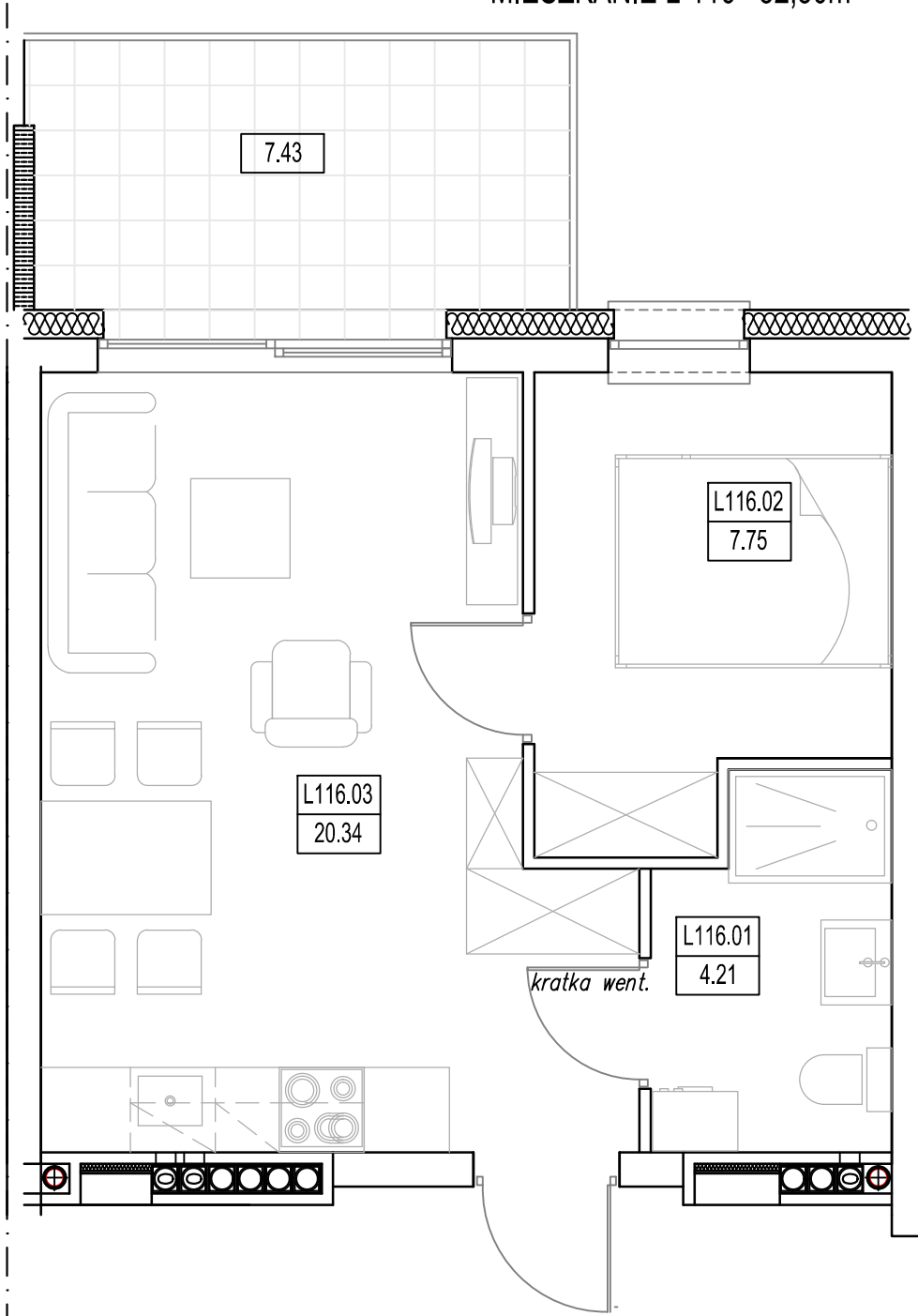
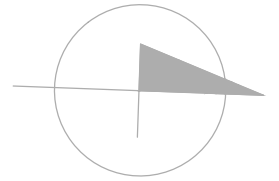
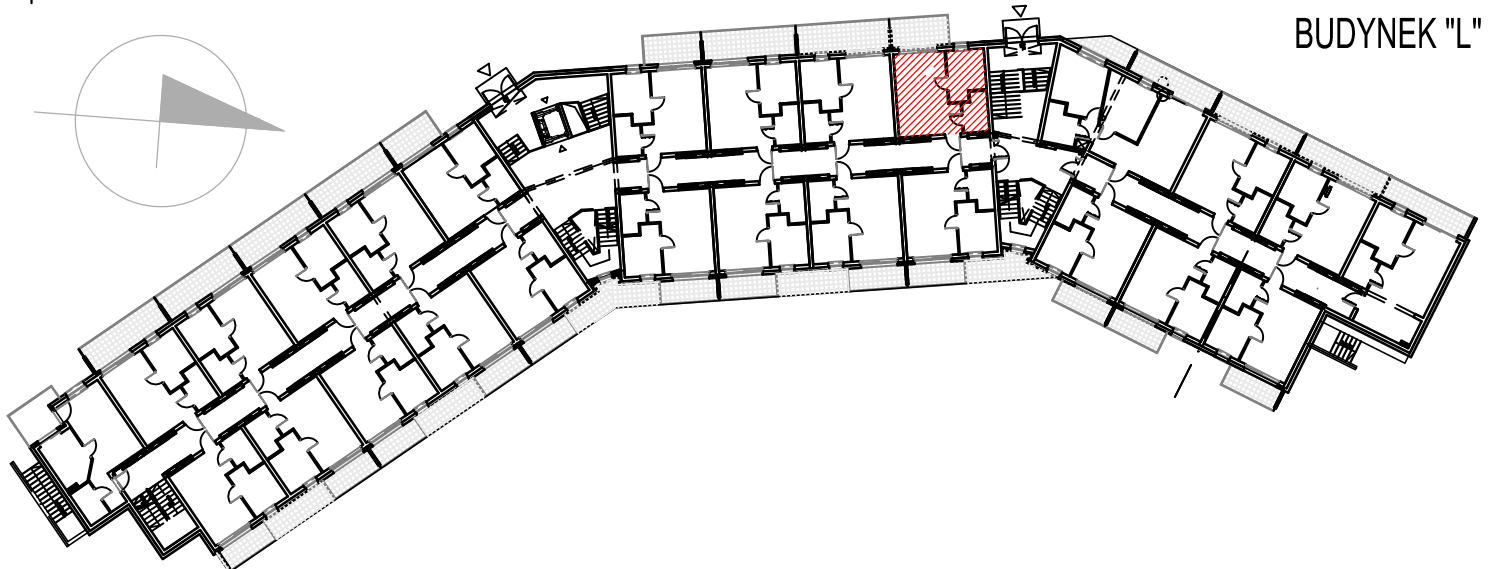


"BURSZTYNOWE OSIEDLE" - JANTAR UL. RYBACKA  
 BUDYNEK "L", PARTER  
 MIESZKANIE L-116 32,30m<sup>2</sup>



MIESZKANIE L-116 (2 POKOJE)			
L116.01	Łazienka	4.21	4.21
L116.02	Pokój	7.75	7.75
L116.03	Pokój/aneks kuch.	20.34	20.34
RAZEM MIESZKANIE L-116		32.30	32.30



BUDYNEK "L"