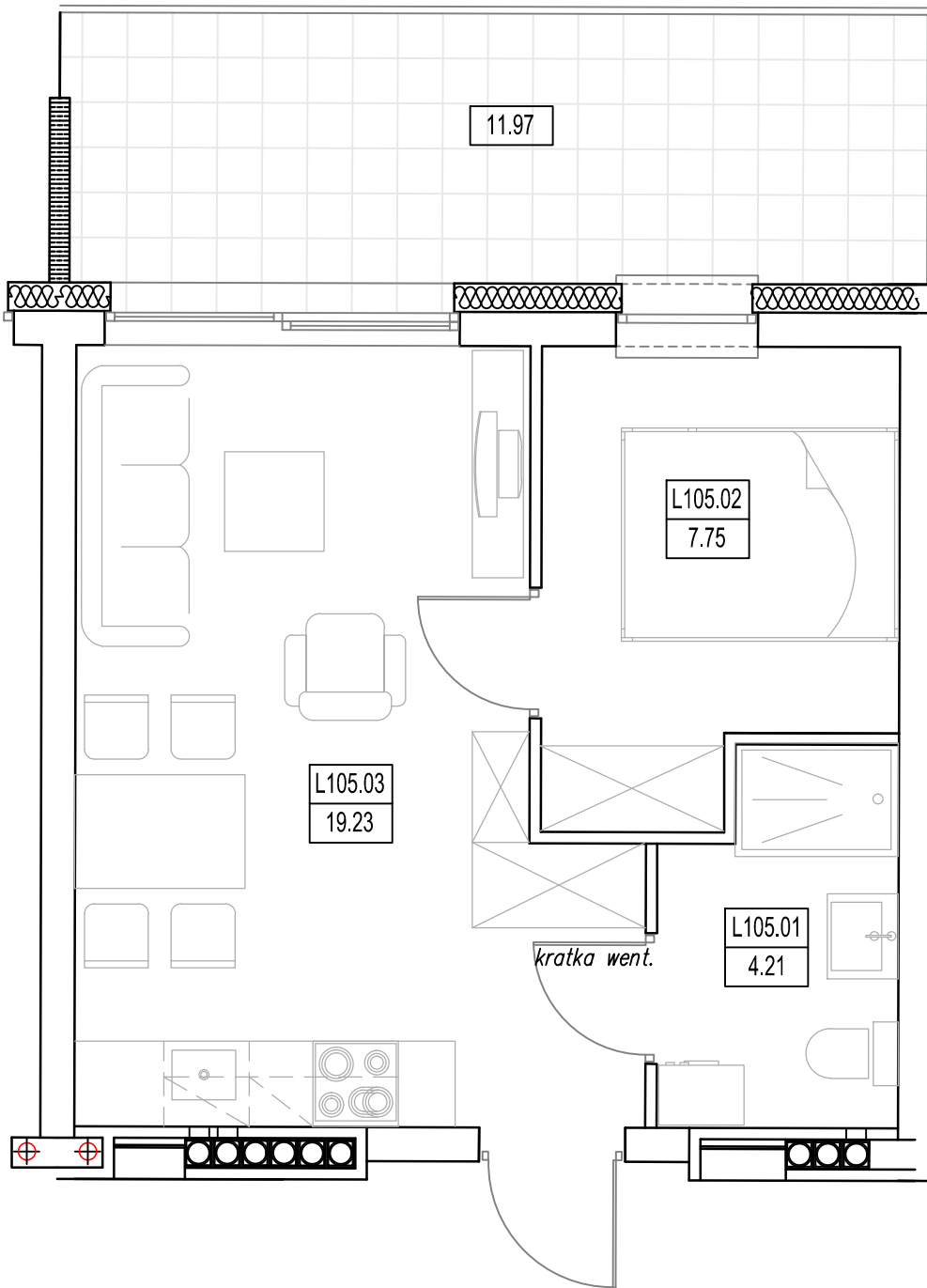
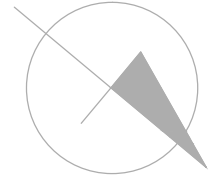
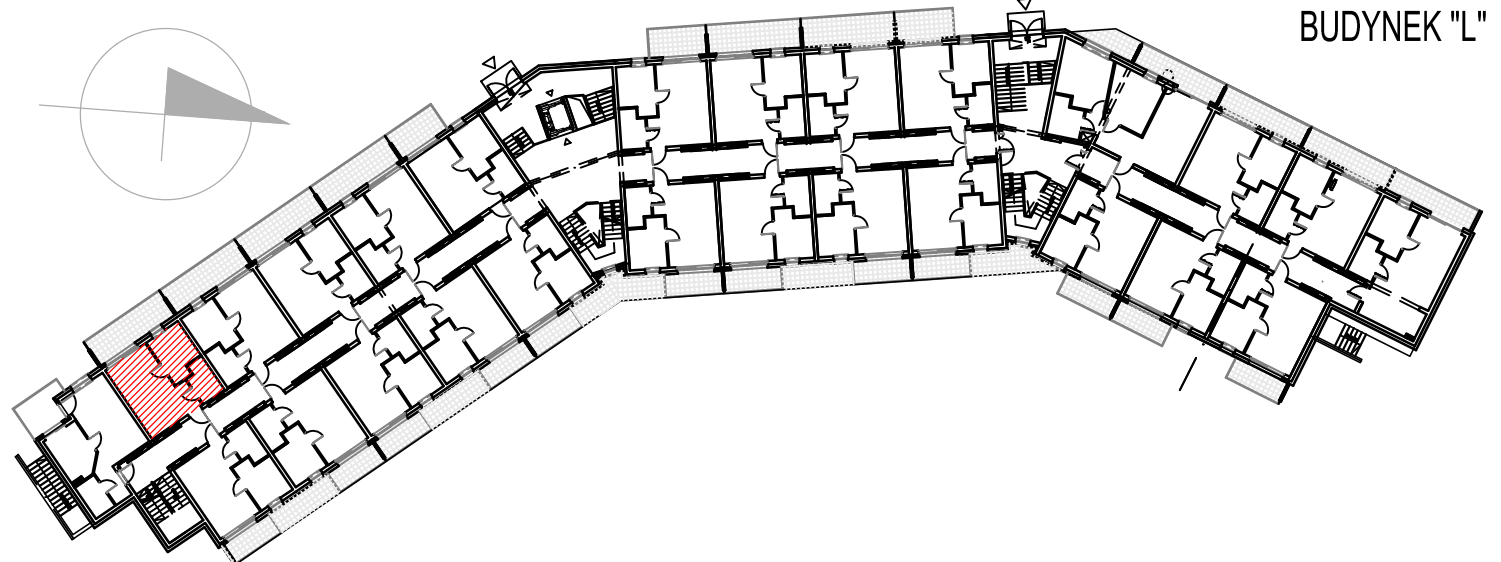


"BURSZTYNOWE OSIEDLE" - JANTAR UL. RYBACKA
 BUDYNEK "L", PARTER
 MIESZKANIE L-105 31,19m²



MIESZKANIE L-105 (2 POKOJE)			
L105.01	Łazienka	4.21	4.21
L105.02	Pokój	7.75	7.75
L105.03	Pokój/aneks kuch.	19.23	19.23
RAZEM MIESZKANIE L-105		31.19	31.19



BUDYNEK "L"